

LONCOR
HOMES

Glenbrook

Discover the best of London living
in the heart of Hammersmith

wheelchair adaptable
apartments



At a glance

Development address

Glenthorne Road,
London W6

Local Council

London Borough
of Hammersmith
& Fulham

Architect

21st Architecture

Developer

Loncor Homes

Completion date

Autumn/Winter 16

Tenure

999 year leasehold

Building insurance

10 NHBC Year
Guarantee

Service charge

Estimated £3.50
per sq ft

Ground rents

- Studio £400
- 1 bedroom £300
- 2 bedroom £400
- 3 bedroom £600



Computer generated image is indicative only.



Computer generated image is indicative only.

Specifications

- All apartments thoughtfully designed using finest materials, fixtures and fittings including engineered oak flooring and Villeroy & Boch sanitary ware.
- Bespoke contemporary open-plan kitchens equipped with high-quality appliances.
- Designed to code for sustainable homes level 4 standards
- Large communal roof terrace on the 6th floor
- Central building heating system for sustainable, affordable energy
- Dedicated concierge service and video door entry
- Five wheelchair accessible or easily adaptable units



Computer generated image is indicative only.

Wheelchair adaptable apartments

There are five adaptable apartments at Glenbrook.

One bedroom

G.01
G.03

Two bedroom apartments

G.02
G.04
1.05

Please speak to a Glenbrook sales associate if you wish to adapt a different unit than is listed here.

Each adaptable apartment can be adjusted to meet specific requirements or have been constructed with accessibility in mind.

Adaptable apartment features

- Entrances with an effective clear opening width of 800mm with step-free access
- Wheelchair turning space in dining areas and living rooms; basic circulation space for wheelchair users elsewhere
- Living room provided on the entrance level of every apartment
- An accessible bathroom with a level access shower in every apartment on the same storey as a main bedroom.
- Layouts provide a reasonable route between bedroom and bathroom
- Kitchen cabinets can be amended to start at a height of 750mm, and worktops at a height of 750mm

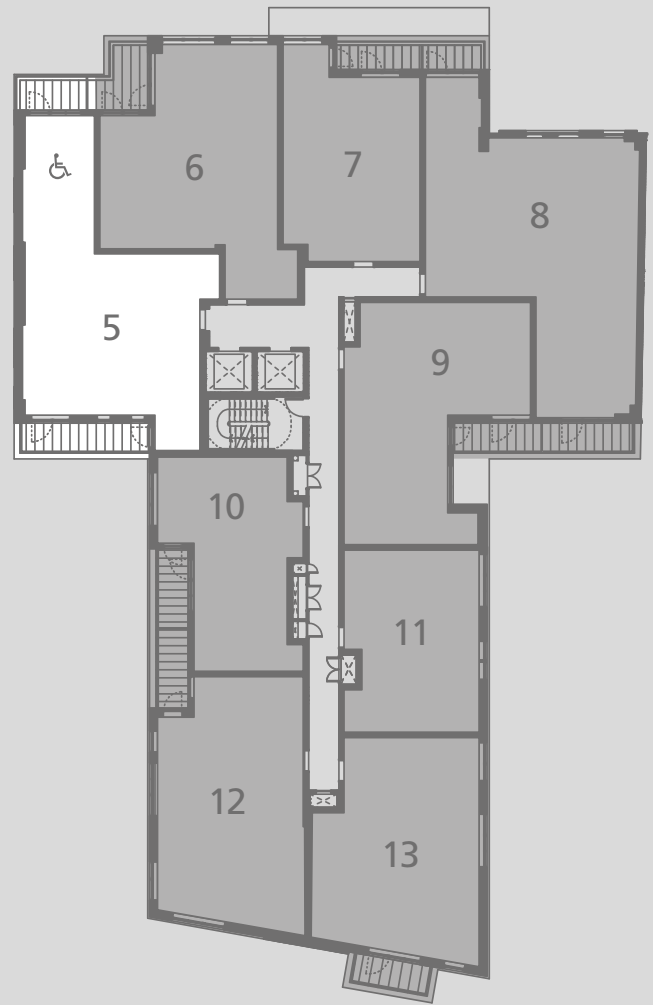
Floorplans

Ground Floor

Glenthorne Road



First Floor



Travel distances

London Underground

Five minute journey to Hammersmith Station (Piccadilly, District, Hammersmith and City and Circle Line). This station has step-free access.

National Rail

National Rail lines run from Kensington Olympia (7 minutes in a taxi) and West Brompton Station (9 minutes in a taxi).

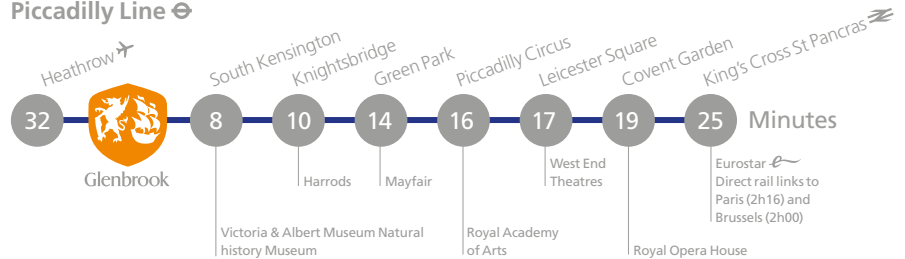
Car

Secure underground disabled parking spaces are available in the basement carpark for purchase. The A406 and the M4 connect easily with other main UK motorways.

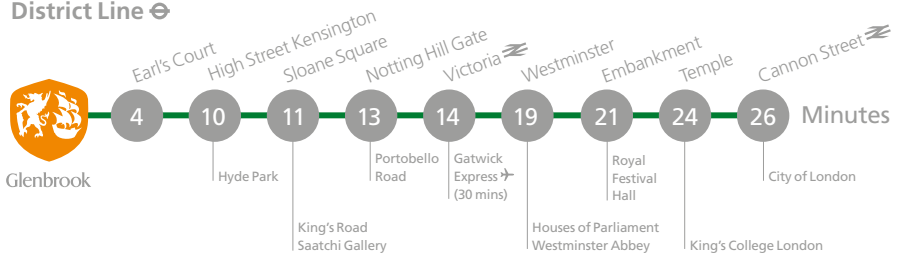
Taxi

Notting Hill – 13 mins
 South Kensington – 15 mins
 Paddington – 17 mins
 Knightsbridge – 17 mins
 Sloane Square – 19 mins

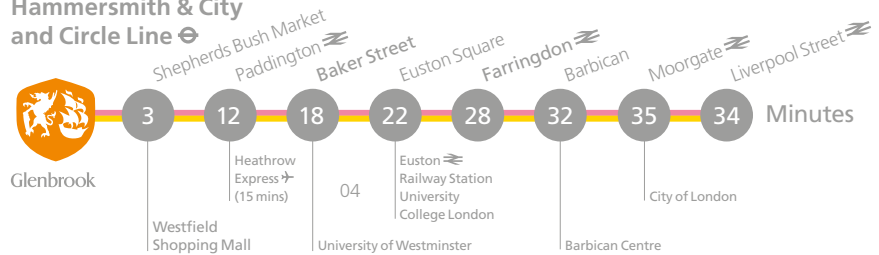
Piccadilly Line



District Line



Hammersmith & City and Circle Line



Contact

All computer generated images are indicative. All journey times sourced from TfL.gov.uk and googlemaps.com. Journey times calculated from Hammersmith Underground station.

**LONCOR
HOMES**



info@loncorhomes.co.uk
 loncorhomes.co.uk
 glenbrooklondon.com

020 8747 0661
 chiswick@fraser.uk.com
 fraser.uk.com